



Deutscher Fallschirmsportverband (DFV) e.V.
Deutscher Aero-Club (DAeC) e.V. Luftsportgerätebüro



An alle Vereine / Schulen / Fallschirmtechniker / Fallschirmwarte / Besitzer

Technische MITTEILUNG **für Tandem**

Herausgegeben: 28. Dez. 2021

Nummer: 2021-03 TM UPT Sigma Tandemreserve Riser

Bezug: INSTRUCT-062 REV.0
„Sigma Tandem Reserve Riser compatibility and modification“
the correct Sigma Tandem reserve riser configuration must be used
for installation of UPT approved tandem reserve canopies

Betroffene Muster: Mirco Sigma Tandem, Sigma Tandem

Maßnahmen: entsprechend der Konfiguration die Tandem Reserve Riser und Links,
bei Bedarf zu modifizieren, siehe originale Mitteilung von UPT

Durchzuführen bis: **bei Tausch der Reserve, wenn der Wechsel zwischen Boxen
L-Bar und Rapide Link notwendig ist**

Durchzuführen von: Kontrolle durch den Wart / Techniker
Modifikation nur durch einen Techniker

Dokumentation: Optional in Abhängigkeit der Maßnahme im Dokument des Gurtzeuges

Bemerkungen: Im Anhang die Mitteilung von UPT. Bei Fragen an den Hersteller
wenden. Es dürfen nur vom Hersteller freigegebene Reserven in die
Sigma Tandems eingebaut werden.

Verteiler: Techniker, Warte, Händler, Vereine, Sprungzentren, Besitzer

Ablage: ParaOrg: 2021-03 TM UPT Sigma Tandemreserve Riser

DFV-Überherrn, den: 28. Dez. 2021

Ralf Homuth
Referat Technik DFV



Sigma Tandem Reserve Riser compatibility and modification

To ensure proper compatibility, the correct Sigma Tandem reserve riser configuration must be used for installation of UPT approved tandem reserve canopies

A certified FAA Master Parachute Rigger (or foreign equivalent) is approved by UPT to perform a change of configuration, following instructions outlined in this document.

Each instruction is for a single reserve riser of 4 total. Contrasting stitch color is used for illustration purpose throughout.

Content:

- Page 2: Overview of tandem reserve riser configurations with link types
- Page 3: Change from original L-bar link to Rapide link
- Page 5: Change from Rapide link to boxed L-Bar link
- Page 8: Change from boxed L-bar link to Rapide link

Tools/materials required:

- Pencil or chalk
- Seam ripper and/or needle nose pliers
- Scissors
- 2½" Type 12 tape x 4 (Change from Rapide link to boxed L-bar configuration only)
- Harness machine (Change from Rapide link to boxed L-bar configuration only)

Rigging DEPARTMENT



Reserve riser configurations

Original L-bar

4-point with combined $\frac{3}{4}$ box pattern

*Only for L-bar and
VR360 (VTC-xxxR) Tandem Reserve Canopy*



Rapide link

4-point pattern

*Only for #6 Rapide link and
SR-340 / SR-370 Tandem Reserve Canopies*



Boxed L-bar

4-point with separate box pattern

*Only for L-bar and
VR360 (VTC-xxxR) Tandem Reserve Canopy*



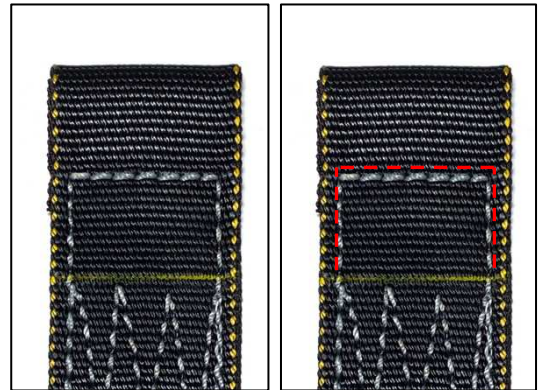
Rigging DEPARTMENT



Change from original L-bar to Rapide link

Draw a line across reserve riser, $\frac{1}{8}$ " above the 4-point pattern

Identify the top part of the $\frac{3}{4}$ box above the line to be unpicked and removed (marked in red)



Unpick the $\frac{3}{4}$ box stitching, with caution not to damage or pull out any part of the webbing

Starting at the top center is helpful for capturing an initial stitch, especially on matching thread and webbing colors



Trim threads at the drawn line and clean up both sides of reserve riser

Verify that no webbing is damaged and the 4-point is intact

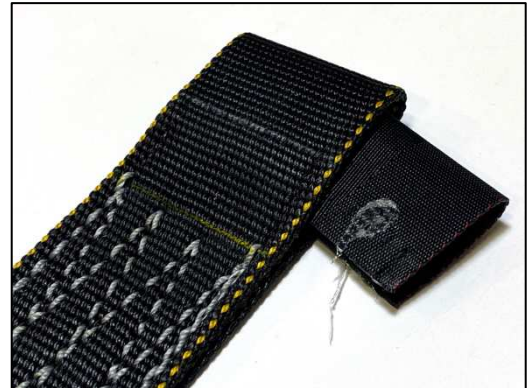


Rigging DEPARTMENT

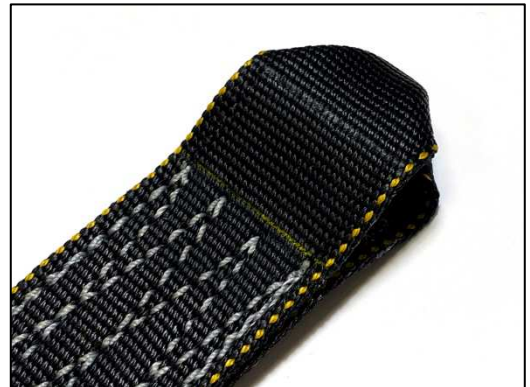


Remove and discard T12 buffer

Remove any glue residue remaining inside riser



Fold in sides of reserve riser end to allow installation of #6 Rapide link



Rigging DEPARTMENT



Change from Rapide link to boxed L-bar

Cut Type 12 tape buffer, 2½" long

Fold the buffer in half to a tear drop shape, lining up raw edges



Draw 2 lines across reserve riser;

- 1" from riser end
- ⅛" above 4-point pattern



Insert Type 12 buffer into reserve riser, and secure in place fully up against riser end using hot glue/tape

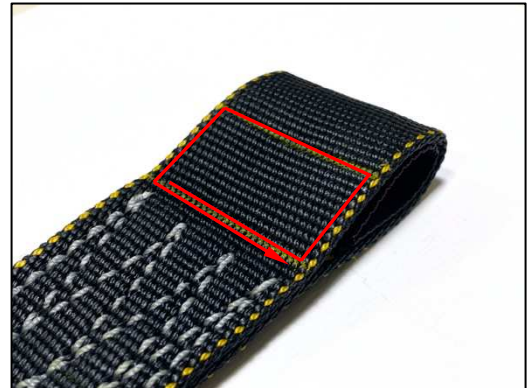


Rigging DEPARTMENT

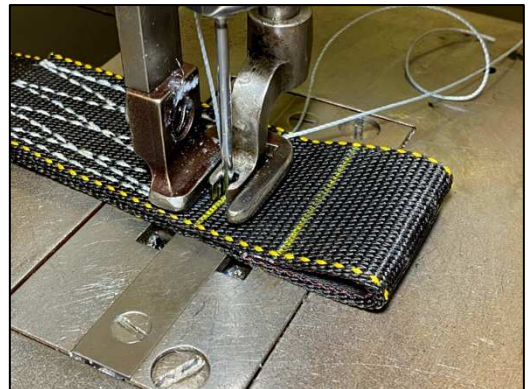


A separate box stitch is sewn onto reserve riser end following the drawn lines, as indicated in red

The box stitch must be sewn with Nylon 5-cord thread

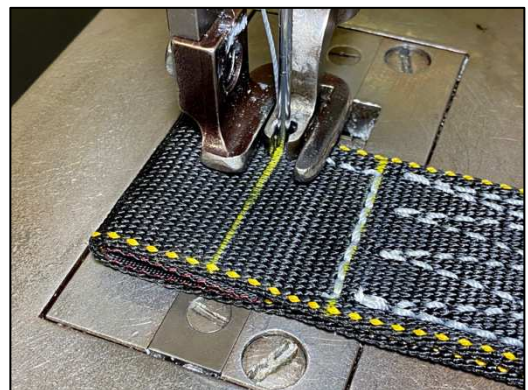


Start on the drawn line $\frac{1}{8}$ " above, and clear of, 4-point stitch pattern



Ensure that Type 12 buffer is captured by top part of box stitch

Complete box stitch by over stitching onto the first stitch row



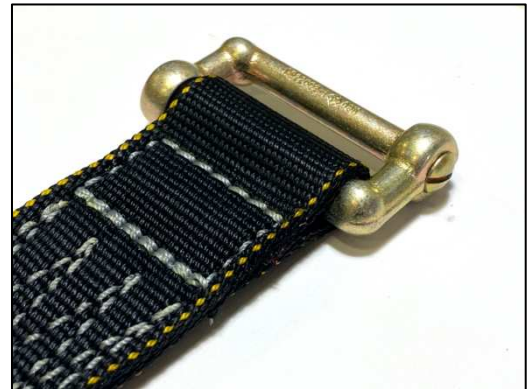
Rigging Department



Example of 4-point and finished separate box stitch



Open buffer to insert and attach L-bar onto riser



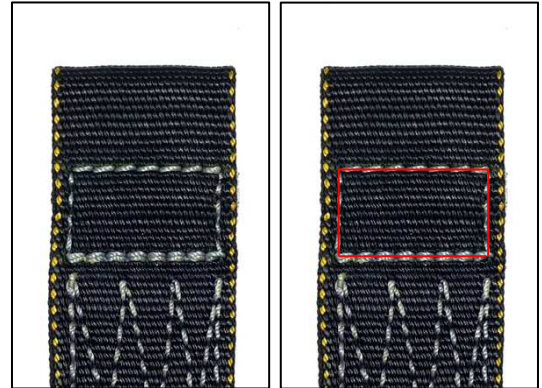
Rigging DEPARTMENT



Change from boxed L-bar to Rapide link

Identify the separate box stitch to be unpicked and removed (marked in red)

Unpick the box stitching, with caution not to damage or pull out any part of the webbing



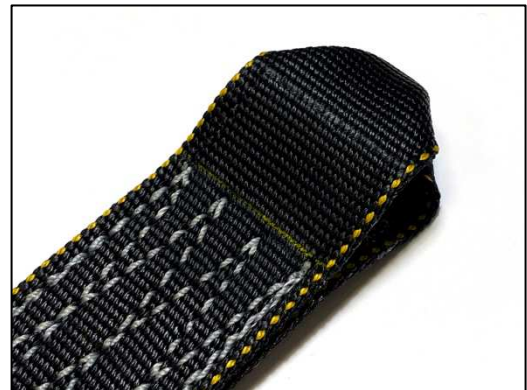
Verify that no webbing is damaged and the 4-point is intact

Remove and discard T12 buffer

Remove any glue residue remaining inside riser



Fold in sides of riser to allow installation of #6 Rapide link



Rigging DEPARTMENT